

DELRAY LAKES

A PLAT OF A PORTION OF SECTION 8, TOWNSHIP 46 SOUTH, RANGE 43 EAST AND ALSO A REPLAT OF A PORTION OF THE AMENDED PLAT OF ISLES OF DELRAY SECTION 2 AS RECORDED IN PLAT BOOK 71, PAGES 58 THRU 62 OF THE PUBLIC RECORDS OF PALM BEACH COUNTY, FLORIDA
CITY OF DELRAY BEACH PALM BEACH COUNTY, FLORIDA

JANUARY 3RD, 1996
SHEET 2 OF 5

Ralph B. Benuzzo & Associates, Inc.

Consulting Engineers, Planners, Surveyors
6100 Boulevard of Champions
North Lauderdale, Florida 33068
(954) 969-8100
FAX (954) 969-9680

BEARING BASE: CENTERLINE OF ENFIELD COURT
PER RECORDED PLAT OF ISLES OF DELRAY SECTION 2
PLAT BOOK 71 PAGE 62

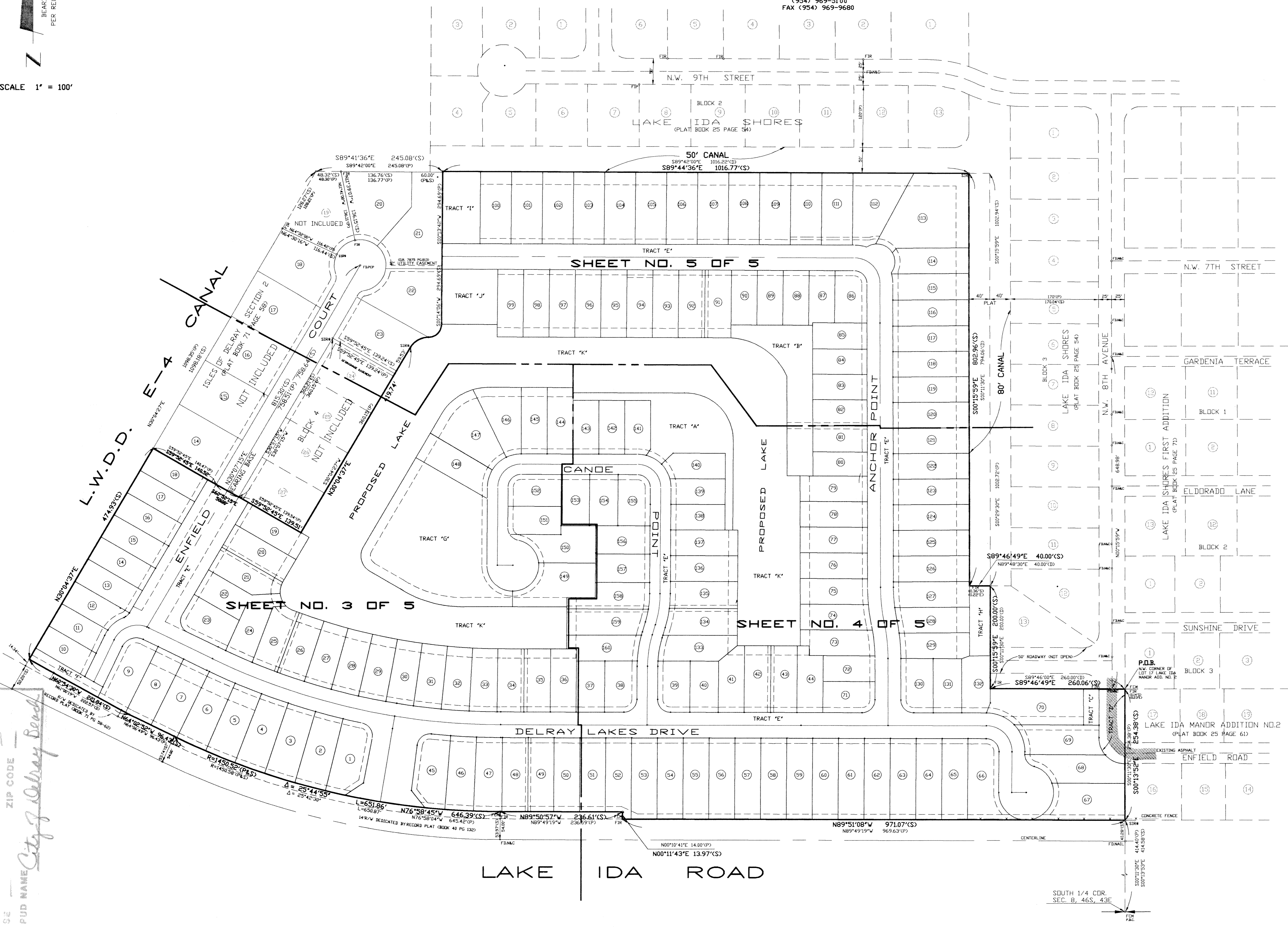
SCALE 1" = 100'

LEGEND

- R = RADIUS
- A = CENTRAL ANGLE
- L = ARC LENGTH
- R/W = RIGHT OF WAY
- CD = SET CONCRETE MONUMENT
- CR = PERMANENT REFERENCE MONUMENT
- CP = PERMANENT CENTRAL POINT
- FCM = FOUND IRON ROD
- FIR = FOUND IRON ROD
- POB = POINT OF BEGINNING
- POC = POINT OF COMMENCEMENT
- OP = PLAT
- CS = SURVEY
- CD = DEED
- DR = OFFICIAL RECORDS
- SCM = SET CONCRETE MONUMENT
- CL = CENTERLINE
- PLS = PROFESSIONAL LAND SURVEYOR
- PRM = PERMANENT REFERENCE MONUMENT
- PS = PLAT BOOK
- PG = PAGE
- EDP = EDGE OF PAVEMENT
- SIRM = SET IRON ROD #3444
- LA-E = LIMITED ACCESS EASEMENT
- GR = RADIAL LOT LINE
- MRL = MENARDIAL LOT LINE
- CHD = CHORD BEARING - DISTANCE
- FDNAC = FOUND NAIL AND CAP

TAZ-557

SUBDIVISION: *Delray Lakes*
 BOOK: 78
 FLOOD ZONE: FLOOD MAP # 185
 QUAD: ZONING
 SE: ZIP CODE
 PUD NAME: *City of Delray Beach*



KEY MAP

- GENERAL NOTES:**
- 1: SEE BOUNDARY SURVEY FOR LOCATION OF EXISTING UTILITIES AND TOPOGRAPHIC INFORMATION
 - 2: MEASUREMENTS SHOWN HEREON ARE EXPRESSED IN FEET AND DECIMAL PARTS THEREOF.
 - 3: ELEVATIONS SHOWN HEREON ARE BASED ON NGVD DATUM AND ARE RELATIVE TO THE FOLLOWING BENCHMARK: PALM BEACH COUNTY BM DEPOT ELEVATION = 13.551
 - 4: MINIMUM FINISH FLOOR ELEVATION = 16.40
 - 5: SEE BOUNDARY SURVEY FOR LOCATION OF EXISTING EASEMENTS
 - 6: SOURCES OF INFORMATION USED IN THE PREPARATION OF THIS SURVEY AND PRELIMINARY PLAT ARE AS FOLLOWS:
 - A) TITLE COMMITMENT NO. FA-CC-198178, DATED 6/21/95
 - B) RECORD PLAT OF ISLES OF DELRAY SECTION 2 PER PLAT BOOK 40 PAGE 132 THRU 133
 - C) AMENDED PLAT OF ISLES OF DELRAY SECTION 2 PER PLAT BOOK 71 PAGE 58 THRU 62
 - D) RECORD PLAT OF LAKE IDA SHORES PER PLAT BOOK 25, PAGE 54
 - E) RECORD PLAT OF LAKE IDA MANOR ADDITION 2 PER PLAT BOOK 25, PAGE 61
 - 7: BEARINGS SHOWN HEREON ARE BASED ON THE RECORD PLAT OF ISLES OF DELRAY AMENDED IN RECORD PLAT BOOK 71 PAGES 58 THRU 62

TOTAL AREA = 40.820 ACRES